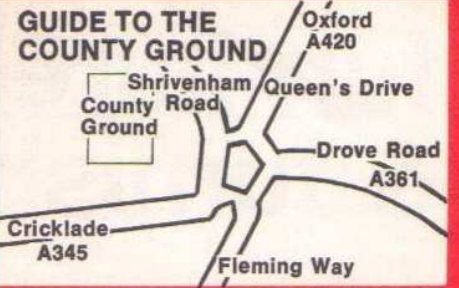




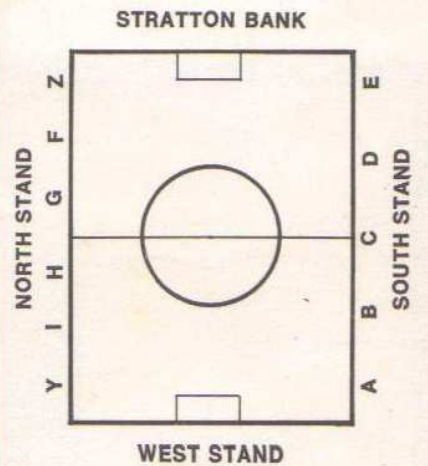
SWINDON TOWN FOOTBALL CLUB



official programme 1/-



KEY TO GROUND



PROGRAMME CONTENTS

- News and Views
- Our Visitors
- League Table
- Teams
- Supporters Club Notes
- Club Information

furniture & furnishings

of charm and distinction . . .
carpets floor coverings loose
covers curtains skilled workshop
repair service . . .

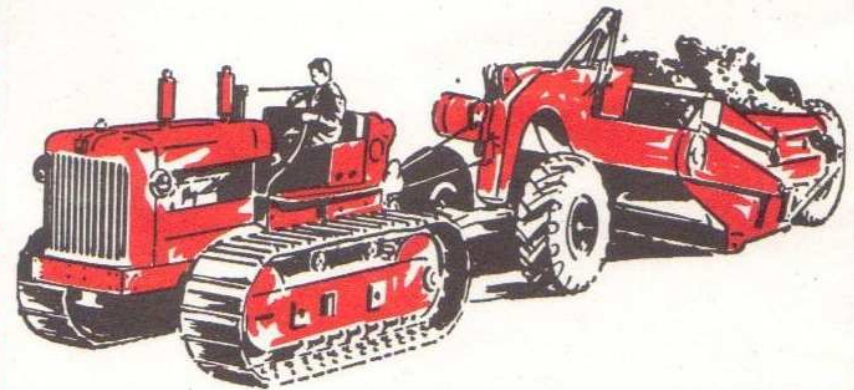


mills+merricks
ltd established over 65 years
16/17 Bridge Street Swindon phone 5365/6

H. HIBBERD LTD.

40 NEWPORT STREET, SWINDON

Plant Hire Contractors



FOR YOUR EARTH-MOVING EQUIPMENT

TELEPHONE SWINDON 6125



*Back Row:—Mick Blick, Rod Desmeules, Frank Burrows, John Trollope, Peter Downsborough, Roy Jones, Roger Smart, Rod Thomas, Owen Dawson, Stan Harland
Front Row:—Don Heath, John Bailey, Jimmy Giles, John Smith, Chris Jones, Peter Noble, Barry Lowes, Joe Butler, Don Rogers*

SWINDON TOWN v. BURNLEY

FOOTBALL LEAGUE CUP SEMI-FINAL (2nd Leg)

SOUVENIR EDITION

HOW THEY GOT THERE

Football League Cup Semi-final (2nd Leg)

BURNLEY

1st ROUND — Bye

2nd ROUND v. GRIMSBY TOWN (away)

Draw 1 - 1. Scorer: Lockhead

Team: Thomson; Angus, Latcham; O'Neil, Waldron, Merrington; Coates, Lockhead, Casper, Bellamy, Thomas. Sub. Blant.

2nd ROUND REPLAY v. GRIMSBY TOWN (home)

Won 6 - 0. Scorers: Casper 2, Lockhead 2, Thomas, Murray

Team: Thomson; Angus, Latcham; O'Neil, Waldron, Merrington; Coates, Lockhead, Casper, Bellamy, Thomas. Sub. Murray.

3rd ROUND v. WORKINGTON (away)

Won 1 - 0. Scorer: Blant

Team: Thomson; Murray, Latcham; O'Neil, Waldron, Merrington; Coates, Blant, Casper, Todd, Thomas. Sub. Dobson.

4th ROUND v. LEICESTER CITY (home)

Won 4 - 0. Scorers: Thomas, Murray 2, Casper

Team: Thomson; Smith, Latcham; Dobson, Waldron, Blant; Thomas, Murray, Casper, Coates, Kindon. Sub. Todd.

5th ROUND v. CRYSTAL PALACE (home)

Won 2 - 0. Scorers: Casper (pen), Murray

Team: Thomson; Smith, Latcham; Dobson, Waldron, Blant; Thomas, Murray, Casper, Coates, Kindon. Sub. Probert.

SEMI-FINAL v. SWINDON TOWN (1st Leg) (home)

Lost 1 - 2. Scorer: Coates

Team: Thomson; Smith, Latcham; Dobson, Waldron, Blant; Thomas, Murray, Casper, Coates, Kindon. Sub. O'Neil.

SWINDON

1st ROUND v. TORQUAY UNITED (home)

Won 2 - 1. Scorers: Smart, Noble

Team: Downsborough; Thomas, Trollope; Smart, Burrows, Harland; Heath, Noble, Jones, Smith, Rogers. Sub. Butler.

2nd ROUND v. BRADFORD CITY (away)

Draw 1 - 1. Scorer: Smart

Team: Downsborough; Dawson, Thomas; Butler, Burrows, Harland; Heath, Smart, Smith, Noble, Rogers. Sub. Jones.

2nd ROUND REPLAY v. BRADFORD CITY (home)

Won 4 - 3. Scorers: Smith, Rogers, Smart, Noble

Team: Downsborough; Dawson, Thomas; Butler, Burrows, Harland; Heath, Smart, Smith, Noble, Rogers. Sub. Jones.

3rd ROUND v. BLACKBURN ROVERS (home)

Won 1 - 0. Scorer: Rogers

Team: Downsborough; Dawson, Thomas; Butler, Blick, Harland; Heath, Noble, Jones, Smith, Rogers. Sub. Penman.

4th ROUND v. COVENTRY CITY (away)

Draw 2 - 2. Scorers: Rogers, Smart

Team: Downsborough; Butler, Thomas; Penman, Burrows, Harland; Heath, Smart, Smith, Noble, Rogers. Sub. Jones.

4th ROUND REPLAY v. COVENTRY CITY (home)

Won 3 - 0. Scorers: Rogers, Smart, Penman

Team: Downsborough; Butler, Thomas; Penman, Burrows, Harland; Heath, Smart, Smith, Noble, Rogers. Sub. Jones.

5th ROUND v. DERBY COUNTY (away)

Draw 0 - 0.

Team: Downsborough; Butler, Thomas; Penman, Burrows, Harland; Heath, Smart, Smith, Noble, Rogers. Sub. Dawson.

5th ROUND REPLAY v. DERBY COUNTY (home)

Won 1 - 0. Scorer: Rogers

Team: Downsborough; Dawson, Thomas; Butler, Burrows, Harland; Heath, Smart, Smith, Noble, Rogers. Sub. Jones.

SEMI-FINAL v. BURNLEY (1st Leg) (away)

Won 2 - 1. Scorers: Harland, Noble

Team: Downsborough; Dawson, Thomas; Butler, Burrows, Harland; Heath, Smart, Smith, Noble, Rogers. Sub. Penman.



Back Row:—Martin Dobson, Harry Thomson, Colin Waldron (Capt), Steve Kindon Middle Row:—Colin Blant, David Thomas, Les Latcham, John Murray, Ralph Coates, David Merrington Front Row:—Freddie Smith, Brian O'Neil, Doug Collins, Frank Casper

BURNLEY FOOTBALL CLUB 1968

Reproduced by kind permission of Burnley Express

Copyright

As it happened v. Burnley (1st Leg)



The first goal, by Stan Harland.

SWINDON TOWN FOOTBALL COMPANY LIMITED

Registered Office: COUNTY GROUND, SWINDON

Mr. W. J. CASTLE (President) Mr. J. DAVIES (Vice-President)

DIRECTORS:

Mr H. E. LANE (Chairman) Mr. R. FRICKER (Vice-Chairman)

Messrs. F. L. COLLINGS, A. W. DONE, M. EARLE, C. J. GREEN, F. PLYER,

H. WILLIAMS, K. H. WILMER and Dr. J. NICHOLAS

Manager: D. WILLIAMS Secretary: R. A. MORSE

VOL. 19

WEDNESDAY, 4th DECEMBER, 1968

No. 15

WEDNESDAY, 4th DECEMBER, 1968

FOOTBALL LEAGUE CUP SEMI-FINAL
(Second Leg)

SWINDON TOWN

v.

BURNLEY

Kick-off 7.30 p.m.

REFEREE:

MR. K. H. BURNS (Stourbridge)

LINESMEN:

Red Flag—MR. R. A. COLE (Malvern)

Yellow Flag—MR. D. E. SAUNDERS (Poole)

NEWS and VIEWS

It has often been said, "This national game of football has become a heritage and a bright thread in the pattern of all our lives." The character of great clubs is often formed by the atmosphere of the neighbourhood in which the teams play, and by the spirit of those who support the teams. This could be said of Swindon (it will be a calamity if we lose at home), and it is certainly true of Burnley.

Burnley, with its population of 75,000, is the smallest town to support a club in the First Division (46 seasons). Perhaps nowhere in the country is there quite the same relationship between the community and the team that bears their banner of hope and achievement. It is a true community because Burnley F.C. have seldom delved heavily into the transfer market.

They catch them young—on the moors or in the mills, and if these mills at times have seemed to grind long and exceedingly small, they grind them true, home grown products in the main. Here evolves the deep affinity between the actor and the audience. They are friends and they grow up together.

Such is Burnley—a real true Lancashire club with a great tradition. In 1914 they won fame and made history when they won the F.A. Cup at the old Crystal Palace ground, beating Liverpool 1—0. It was that day that Tommy Boyle, the Burnley captain, found himself being presented with the trophy by King George V, the first reigning monarch ever to attend a Cup Final, wearing a red rose in his buttonhole as a mark to the County Palatine.

Burnley's greatest achievement was that wonderful feat of going unbeaten for 30 matches, between September, 1920 and

NEWS AND VIEWS—continued

March, 1921—a figure never likely to be surpassed. I was fortunate enough to see that famous team of claret and blue jerseys play once during that period, against Chelsea at Stamford Bridge.

What a team of outstanding players. Jerry Dawson, Lancashire-born and a one-club man, rated the finest goalkeeper ever and who made 692 appearances between 1906 and 1929. The dour half back line of George Halley, Tommy Boyle (a wonderful centre half, who originally played for Barnsley) and Willie Watson. The one and only Joe Kelly, Jack Bruton and Bert Freeman, the centre forward who scored the goal that won Burnley the Cup. So one could go on, right down to the present day, and their team of young 'local lads'.

Swindon have met Burnley on five occasions in the F.A. Cup (tonight we play in the League Cup). In 1909-10 (in our Southern League days) we defeated them at home 2—0, and went on to beat Tottenham Hotspur at home 2—0 and Manchester City 2—0, but lost in the semi-final against Newcastle United (played at Tottenham) 0—2.

In 1923-24 we drew in the fourth round 1—1 at Swindon, but lost the replay 1—3.

I have vivid recollections of that game, which I viewed from a seat near the players entrance. Burnley still retained most of their great team which enjoyed that unbroken run. Jerry Dawson was in goal, and Kelly was inside right, but Boyle had been replaced by tall "Ginger" Hill, transferred from Plymouth Argyle in 1923 for a fee of £6,000. He had played often at the County Ground for his previous club. The game naturally aroused great interest. Swindon unfortunately conceded a rather lucky goal just before half-time, Harold Fleming scored the equaliser, amidst great excitement, five

NEWS AND VIEWS—continued

minutes before the end of the game. No doubt many here this evening will remember the game and the team. Swindon: Randall; Dickenson (capt.) (still living in Moredon Road), Weston (Tober of the double kick); Cooper (still living in Sunnyside Avenue), Bew, Waring; Denyer (living in Belle Vue Road), Crossley, Fleming, Johnson (living near Swindon), Davies (Bert, living in Swindon and still a very active worker for Swindon Town F.C.).

In season 1928-29 we drew in the second round 3—3 at Burnley, and won the replay 3—2. In the next round we drew 0—0 at home to Arsenal (played on a snow-bound pitch) and lost 0—1 at Highbury. Those were the days of Harry Morris.

In season 1932-33, Burnley won at the County Ground by 2 goals to one. A tragedy for Swindon, two very soft goals were scored against us.

In season 1947-48, Swindon enjoyed quite a long cup run. After defeating Ipswich Town and Aldershot we were drawn away to First Division Burnley, and created a great surprise by winning 2—0. Jackie Dryden (O.R.) scored the first goal and Maurice Owen the second. We then defeated Notts County (of Tommy Lawton fame) 1—0, but were defeated 0—3 at Southampton.

One final note of interest to both clubs—Louis Page (manager of Swindon Town, 1946-52) scored six goals in a 7—1 win which saved Burnley from relegation in April, 1926.

Burnley today lives and breaths in a new spirit. Led by one of the great characters in football today—Chairman Bob Lord, long serving manager Harry Potts and assistant manager of England fame, Jimmy Adamson.

We welcome them to Swindon and the County Ground. We hope their visit will be an enjoyable one.

WILTS CLEANING SUPPLIES SERVICE

30 FLORENCE STREET

SWINDON

WILTSHIRE

Telephone 21012

Suppliers of all types of cleaning, and ancillary materials, to Hospitals, Local Authorities, Schools, Factories, Shops, Hotels, Clubs, Churches, etc. Special prices and contract prices arranged and a prompt and free delivery within 30 miles of Swindon.

Agents for: Progress Floor Treatments, Polishes etc. S. C. Johnsons Polishes etc. Kimberly Clark Paper Products. Deb Chemicals, Swarfega, Jizer, Janitol, Verve, Lanimol, Tot etc. Geerpres Mopping Equipment, Window Squeegees etc. Floor Scrubbing and Polishing Machines Demonstrated. Electric Light Bulbs, Fluorescent Tubes and Fittings etc.

We supply everything you need for keeping your premises clean at the lowest cost. Plus a free advisory service on all aspects of cleaning problems, this is backed by over 25 years experience in the industrial cleaning field. So, if you have problems, consult us.

Comprehensive range of goods kept, Steel Wool, Floor Pads, Nylon Pads, Brillo Pads, Plastic and Galvanised Buckets, Dustpans, Boiler Fillers, Yarn and Cotton Mops, Broom Handles, Minit Mops, Addis Mops, Tea Towels, Chamols Leathers, Scrim, Disinfectants, Channel Blocks, Toilet Rings, Scouring Powder, Liquid Soap, Bleach, Dusters, Stockinette Wipers, Floorcloths, Toilet Soap, Carbolic Soap, Toilet Cleansers, Toilet Paper, Brasso, Silvo, Duraglit, Windowlene, Air Freshener and Fly Killers, Vapona etc.

MANY OTHER ITEMS STOCKED RING SWINDON 21012

BURNLEY FOOTBALL CLUB

Burnley F.C. was formed in 1881 when amalgamated with the local rugby union football club, and seven years later became one of the 12 founder members of the Football League. The First Division championship trophy has been won by the club on two occasions, firstly in season 1920-21 and again in 1959-60.

The Clarets, as they are known in East Lancashire, have reached the final of the F.A. Cup three times, defeating Liverpool 1—0 in 1913-14 and losing 1—0 to Charlton Athletic in 1946-47 and 3—1 to Tottenham Hotspur in 1961-62.

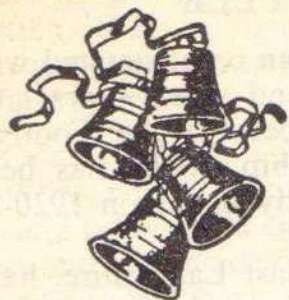
In June, 1968, Burnley completed 21 years continuous membership of the First Division, for when they reached the Cup final in 1947 it was also their season of promotion from Division Two.

Burnley are proud of their present team, and of many past line-ups including the side which, in 1920-21 season, won the First Division championship and set up a record which has never been matched, that of going 30 First Division matches without a single defeat.

The famous half back line of Halley, Boyle and Watson, which figured so prominently in the 1914 Cup success, is still talked of as is the man who scored the only goal, centre forward Bert Freeman.

An interesting sidelight on that Cup win is that the Burnley players each had medals awarded bearing the inscription "English Cup" instead of "F.A. Cup". This was a mistake, but it gave Tommy Boyle, Bert Freeman and the rest of those old-time Clarets the right to claim they had truly won the "English Cup".

Burnley's triumph in 1914 also had a tinge of tragedy about it for goalkeeper Jerry Dawson, Burnley-born, who gave the club 21 years' wonderful service, did not play. He was unfit for the semi-final and despite recovery insisted that his deputy,



W. J. CASTLE

Office and Bakery
4 and 5 MARKET STREET

SWINDON

Telephone 22017

Specialists—

BIRTHDAY CAKES - WEDDING CAKES
DAIRY CREAM - PASTRIES
BUNS - ROLLS - SPONGES

Dobell Shearman & Co. Ltd.

High Street, Swindon

Telephone: 4961

FANCY AND COMMERCIAL STATIONERS
TYPEWRITERS & OFFICE EQUIPMENT

Greetings Cards for all Occasions
from Leading Art Publishers

Heating Services (C.G.H.) Ltd.

HEATING, PLUMBING & VENTILATING
ENGINEERS

INSTALLATION & REPAIRS
24 HOUR MAINTENANCE SERVICE

28 BUCKINGHAM RD.

Tel: SWINDON 27630

BURNLEY FOOTBALL CLUB—continued

Ronnie Sewell, should play in the final. Dawson is recalled as one of the Turf Moor greats along with Boyle, Bob Kelly and Jimmy Adamson (present club coach) and Jimmy McIlroy, the guiding lights in the 1960 championship and 1962 Wembley teams. But so many players of rare talent have worn the changing colours of the club over the years that it is difficult knowing whom to omit from mentioning. Following the mighty Boyle at centre half was Jack Hill and Louis Page, later Swindon manager, is another ex-Claret whose name is often on the lips of Burnley followers. It was Page who was switched from outside left to centre forward for a match at Birmingham City when Burnley badly needed points to escape relegation. Louis scored six goals and Burnley won 7—1.

Burnley have discovered some wonderful footballers and continue to do so, as is evidenced by their 1968 success in the Football Association Youth Cup competition.

But among their greatest ever "finds" was Tommy Lawton, a Bolton lad who went to Turf Moor as an office boy. He played in the first team when he was 16 (David Thomas was a month younger when he played in 1967) and was transferred to Everton in December, 1936 for £6,500 before becoming one of the greatest centre forwards in the history of the game.

Burnley have high hopes of reaching European competition status for the third time, and the fine new side moulded together by manager Harry Potts, his assistant Jimmy Adamson and the widely-admired coaching and training staff, could develop into one of the best the club has ever produced.

Colin Waldron, at 20 the youngest captain in the First Division, is one of the best prospects among defenders. His name and those of Ralph Coates, David Thomas, Martin Dobson, Frank Casper, John Murray, Harry Thomson, Steve Kindon and others are those who matter now and the future could be every bit as thrilling as the past.

OUR VISITORS



BURNLEY FOOTBALL CLUB

COLIN BLANT

Born Rawtenstall, Lancashire and seen by Burnley scout whilst playing in Lancashire Combination Football. Signed as amateur and after trial period signed professional. Made his first team debut v. Manchester United in 1966/67 season at centre forward, now converted to a defender. Height 6ft. 1in. Weight 13st. 4lbs.

MARTIN DOBSON

Born Blackburn and signed by Burnley after trial period. Played with Bolton Wanderers and was granted a free transfer by them. Came to Burnley as a centre forward but is now playing in the first team with great success at right half. Height 5ft. 11½ins. Weight 11st. 6lbs.

DAVID THOMAS

Born Kirkby in Ashfield, but played all his schoolboy football in the North East, signed by Burnley as a schoolboy and played for England Schoolboys. Signed apprentice professional on leaving school and full professional in October, 1967. England Youth International and a member of our F.A. Youth Cup team which won the Youth Cup last year. Regular member of our first team, a great future is predicted for this young player.

COLIN WALDRON

Born at Oldham, Lancs., and first played in the Football League when with Bury. He joined Chelsea later and in October, 1967, Burnley paid a large fee for his transfer. Waldron was still in his teens until July, 1968, and has plenty of time to develop into the outstanding centre half many experts forecast he will become. Made his First Division debut as a Burnley player at Southampton on October 28th, 1967. Height 5ft. 11¼ins. Weight 12st. 10lbs.

JOHN MURRAY

Born Newcastle upon Tyne and recommended to Burnley for trial, signed professional after trial period. Regular outside right in the reserve team. Has recently been playing in the first team and has averaged a goal in nearly every game.

JIM THOMSON

Born Glasgow. Recently signed by Burnley for a large fee from Chelsea. Signed by Chelsea from a Scottish Junior Club and was a member of the first team pool at Chelsea. Made his debut with Burnley v. Liverpool on October 5th, 1968. Height 5ft. 10ins. Weight 11st. 7lbs.

BRETTS

PET AND GARDEN SUPPLIES

32-33 Commercial Rd.
Swindon

6 Cromwell St.
Swindon

At Your Service

A. E. LUDLOW LTD.

Wholesale Fruit and Potato Merchant

COLBOURNE STREET, SWINDON, WILTSHIRE

Telephone Swindon 3583

We deliver Fresh Fruit, Vegetables and Potatoes daily

WHOLESALE ONLY

FOR ALL YOUR ANGLING NEEDS
CONSULT

FRANK WOODWARD

Swindon's Fishing Tackle Specialist

25 HAVELOCK ST., SWINDON

PHONE 3879

For Paints of Good Quality

H. S. HODGES & SONS

(SWINDON) LTD.

CRICKLADE RD., SWINDON

PHONE 22422

Dulux, Brolac, Valspar, Wallcharm,
etc.

SOUTHERN LAUNDRY CO. LTD.

Launderers and Dry Cleaners

HAYDON ST. - SWINDON

TELEPHONE 4161

The Advertisers in this
programme have supported
the Club. Will you help us
reciprocate by supporting
them whenever possible?

W. J. SELWOOD

Telephone Swindon 5884
Saddlery

General Leather Goods Manufactured
and Repaired to Your Individual
Requirements

103 BROAD STREET
SWINDON, WILTSHIRE

Always at your service

L. BIBBY

For all Types—Rags, Iron and Metal,
etc. Spot Cash Paid. Please Tel. 2101
and our van will call.

THE PADDOCK, ERMIN STREET
STRATTON ST. MARGARET

COWLEY BROS (WROUGHTON) LTD

Building Contractors

28 NEWPORT STREET
SWINDON
Telephone 6870

WISES CATERING SERVICE

(Reg. Wise)

Our Caterer for the past 20 seasons

Guarantees

A GOOD CUP OF TEA AT THE
COUNTY GROUND

A full range of Sweets and Cigarettes
at any of our five kiosks on your
way in. ENJOY YOURSELF

Warnes Rentals—

To be sure!

51 Commercial Road,
SWINDON

Telephone 6486

OUR VISITORS—continued

ARTHUR BELLAMY

From Blackhill, Co. Durham and has gradually built up a fine reputation as a mid-field player. He came to Burnley in 1959 and made his First Division debut against Manchester City at Maine Road in March, 1963. Broke a leg against Liverpool at Anfield in November, 1966, but made a good recovery, has played over 100 times for the first team. Height 5ft. 8ins. Weight 10st.

MICK DOCHERTY

Son of the Queen's Park Rangers manager Tommy Docherty, and came to Burnley at his father's request from Chelsea. Captain of our successful Youth Cup winning team, and a regular member of our Central League side, a fine future is predicted for this tenacious wing half. Height 5ft. 7ins. Weight 9st. 12lbs.

HARRY THOMSON

Made his name as a goalkeeper with the Scottish Junior Club Bo'ness United. A cousin of Alex Young the ex-Everton player. His first team debut was delayed due to the consistency of Adam Blacklaw but it arrived at Leicester on March 20th, 1965. Selected to tour with the Scottish team in the close season of 1967/68. Height 5ft. 9½ins. Weight 11st. 13lbs.

BRIAN O'NEIL

Born at Bedlington, Northumberland, and joined the ground staff on leaving school. He appeared for his County Schoolboy team at outside left and in the half back line, but his normal position with Burnley is right half. He was 19 when he made his First Division debut against West Bromwich Albion at Turf Moor, on April 30th, 1968 and has been a regular member of the team since this date. Has played for Football League and England Under-23 teams. Height 5ft. 7ins. Weight 11st. 5lbs.

DAVID MERRINGTON

Comes from Newcastle upon Tyne and is another player who joined the Burnley playing staff as a junior after being spotted in schoolboy football. All his appearances have been in the half back line. His First Division debut was against Chelsea at Turf Moor on April 24th, 1965 when aged 20. Height 5ft. 11¼ins. Weight 12st. 2lbs.

JOHN ANGUS

One of many players recruited from North East of England and on the retirement of Brian Miller became the Club's senior professional. A native of Amble, he joined the Turf Moor staff at the age of 16 and made his debut against Everton in September, 1956. Has made over 400 first team appearances and has one full International cap. Height 5ft. 11¼ins. Weight 12st. 2lbs.

OUR VISITORS—continued

STEVE KINDON

Another member of our successful Youth Team who is now playing with the first team. Signed as a schoolboy, he attended a rugby playing school and was selected for Lancashire at rugby. Signed full professional in December, 1967 and was a member of the England Youth Team last season. Height 5ft. 11ins. Weight 12st. 12lbs.

DOUG COLLINS

Recently signed by Burnley from Grimsby Town at a substantial fee. Made his first team debut with Burnley v. Chelsea on September 28th, 1968. Height 5ft. 8ins. Weight 10st. 3lbs.

FRANK CASPER

A native of Barnsley who was signed from Rotherham United in June, 1967, for a substantial fee. Made an impressive debut in the first match last season against Coventry City. As a schoolboy he played with Yorkshire Boy's. Slimly built but an effective, useful forward who knows where the goal is and can shoot with great power. Height 5ft. 9ins. Weight 10st. 9lbs.

RALPH COATES

Comes from Hetton-le-Hole, the Durham village which also produced Manager Harry Potts. He was spotted whilst playing at centre forward for Hetton Juniors, but after joining the Groundstaff and later signing as a professional he switched to left wing with outstanding success. He was selected in this position for the England Under 23 squad. Now playing in a midfield roll at inside forward.

LESLIE LATCHAM

Is a native of Crook, County Durham, who has proved his versatility since joining the Turf Moor staff as a Junior. Originally an inside forward, he has played for the club's various teams on both wings, at centre forward, wing half and has now made the left back position in the first team his own, being first choice for this position. Height 5ft. 8½ins. Weight 10st. 8lbs.

SAMMY TODD

Born at Finaghy, Northern Ireland and has already played for Ireland at under 23 and full international level his appearances being at wing half and inside forward. Made his first team debut, when aged 18 against Tottenham Hotspur at Turf Moor on April 21st, 1964, at right back. Height 5ft. 11½ins. Weight 11st. 2lbs.

FREDDIE SMITH

Was born at West Sleekburn, Northumberland and played at right back in the same County schoolboy side as Brian O'Neil. Signed as professional in 1959 and made his first team debut at Stoke when 20 years of age. Has made over 70 appearances in the first team at right back. Height 5ft. 6ins. Weight 9st. 6lbs.

The Borough Stationers

6 Commercial Road Swindon

For all office stationery

Backed by the resources of the
Borough Press

The most comprehensive stock in the District

LUNN'S

FISH BAR and RESTAURANT

COMMERCIAL ROAD, SWINDON

Telephone 3203

Complete meals served all day

Call before the match and on your way home

WILSONS (SWINDON) LTD.

BUILDERS OF MODERN ATTRACTIVE
HOUSES AND BUNGALOWS

Developments at:

Upper and Lower Stratton — Blunsdon and Highworth

Head Office:

90/91 COMMERCIAL ROAD - SWINDON

Telephone Swindon 6361/3

DIVISION III

Date	Opponents	1968	Ground	Result
August 13	Torquay United (League Cup)		14,702 (H)	2-1
17	Stockport County		13,350 (H)	1-0
24	Hartlepool		5,732 (A)	0-0
27	Reading		16,765 (H)	0-0
31	Plymouth Argyle		12,302 (H)	3-0
September 4	Bradford City (League Cup)		7,806 (A)	1-1
7	Watford		8,709 (A)	0-0
10	Bradford City (League Cup Replay)		12,214 (H)	4-3
14	Walsall		10,593 (H)	1-0
18	Bournemouth & Boscombe Athletic		11,920 (A)	0-2
21	Bristol Rovers		10,364 (A)	1-2
24	Blackburn Rovers (League Cup)		15,402 (H)	1-0
28	Shrewsbury Town		12,087 (H)	3-0
October 5	Orient		12,450 (H)	1-0
9	Reading		17,450 (A)	1-0
12	Brighton & Hove Albion		7,547 (A)	3-1
16	Coventry City (League Cup)		23,810 (A)	2-2
19	Torquay United		15,152 (H)	2-1
21	Coventry City (League Cup Replay)		23,828 (H)	3-0
26	Oldham Athletic		4,238 (A)	3-2
30	Derby County (League Cup)		35,104 (A)	0-0
November 2	Southport		18,910 (H)	5-1
5	Derby County (League Cup Replay)		26,449 (H)	1-0
9	Luton Town		17,250 (A)	0-2
16	(1) F.A. Cup Canterbury		(A)	1-0
20	Burnley (League Cup Semi-Final)		(A)	2-1
23	Mansfield Town		(A)	0-2
26	Northampton Town		6,827 (A)	6-2
December 4	Burnley (League Cup Semi-Final)		(H)	
7	(2) F.A. Cup Grantham		(A)	
14	Brighton & Hove Albion		(H)	
18	Torquay United		(A)	
26	Orient		(A)	
28	Oldham Athletic		(H)	
January 4	(3) Gillingham		(H)	
11	Southport		(A)	
18	Luton Town		(H)	
24	Tranmere Rovers		(A)	
25	(4)			
February 1	Barnsley		(A)	
8	(5) Mansfield Town		(H)	
15	Barrow		(A)	
22	Rotherham United		(H)	
March 1	(6) Northampton Town		(H)	
5	Gillingham		(A)	
8	Stockport County		(A)	
11	Barnsley		(H)	
15	Hartlepool		(H)	
18	Rotherham United		(A)	
22	(S.F.) Plymouth Argyle		(A)	
29	Watford		(H)	
April 4	Crewe Alexandra		(A)	
5	Shrewsbury Town		(A)	
8	Bournemouth & Boscombe Athletic		(H)	
12	Bristol Rovers		(H)	
15	Crewe Alexandra		(H)	
19	Walsall		(A)	

Hatton's Newsagency

A. J. D. & N. J. Woodhouse

Newsagents :: Tobacconists
Confectioners

Agents for Wessex School of
Motoring

Booking Agents for Rimes Coaches

6 Regent Circus (near G.P.O.)

Telephone Swindon 22731

HULFORD MOTORS LTD.

SELF DRIVE HIRE

Fleet of 1968 Fords
Escorts De-Luxe - Cortinas De-Luxe
Cortinas 1600 Estate (Bench Seat
Column Change) - Zephyr V4s.

SHRIVENHAM ROAD
(200 yards from Football Ground)
Telephone 4934

Large Car Park Available

For High Class
Central Heating, Plumbing
Painting and Decorating
Electrical Installations
and Repairs

NORTH WILTS
Sanitary and Heating
Co. Ltd.

NEWPORT ST., SWINDON

Telephone 5373/4



Thinking pe

**BRISTOL
BUILDING**

A member of The B

SWIN

Dow

Dawson (2)

Butler (4) Bur

Heath (7) Smart (8) Sm

KEEP

EV

ADV

WITH

Swindon's 12th Man
Penman

Thomson (11) Murray (10)

Blant (6) Wri

Merrington

Mills & M

Complete Hou

Furnishin

16-17 BRIDGE STREET, SW

ple invest in the

WEST SOCIETY

ing Societies Association

Swindon Office
Bristol & West House
Regent Circus
Swindon
Tel: Swindon 6340

Shares and
Deposits in this
Society are
trustee investments

ON TOWN

sborough

Thomas (3)

ws (5)

Harland (6)

n (9)

Noble (10)

Rogers (11)

N TOUCH

NING

RTISER

HE NEWS

These teams are subject
to alteration

Burnley's 12th Man

per (9)

Dobson (8)

Bellamy (7)

ey (5)

Probert (4)

Smith (2)

nes

NLEY

erricks Ltd.

e Furnishers and
Contractors

NDON

Tel: 5365/6

DINNERS
DANCES
LADIES' NIGHT
ANNUAL BALLS

McIlroy's Ballroom

COMMITTEE MEETINGS
RECEPTIONS
ENGAGEMENT PARTIES
PRIVATE LUNCHEONS

McIlroy's Barbary Room

MORNING COFFEE
LUNCHEON
AFTERNOON TEA
SILVER GRILL

*McIlroy's Restaurant
(Fully Licenced)*

McILROY'S

REGENT STREET
SWINDON 5294



THE ALCOHOL FUEL

COATE GARAGE

REPAIRS - OVERHAULS - WELDING
SERVICING - REBORING - TYRES

Props. E. V. & W. H. Mattick
Marlborough Road, Swindon

DIVISION III

(up to and including Saturday, 30th November, 1968)

	P	W	D	L	F	A	Pts
Bournemouth & B.A.	19	12	3	4	33	13	27
Watford	20	10	6	4	24	12	26
Stockport County	20	10	6	4	34	25	26
Swindon Town	18	11	3	4	30	15	25
Barrow	19	11	3	5	32	25	25
Tranmere Rovers	20	11	3	6	32	26	25
Torquay United	21	10	4	7	29	21	24
Luton Town	19	10	3	6	32	19	23
Plymouth Argyle	21	9	5	7	24	20	23
Reading	20	8	5	7	32	24	21
Northampton Town	19	7	6	6	23	23	20
Walsall	21	5	9	7	23	23	19
Rotherham United	20	6	7	7	22	24	19
Bristol Rovers	20	7	4	9	32	37	18
Barnsley	21	5	8	8	24	31	18
Gillingham	20	7	3	10	29	30	17
Mansfield Town	20	6	5	9	26	27	17
Southport	20	7	3	10	33	36	17
Orient	19	5	7	7	24	29	17
Hartlepoons United	20	4	9	7	17	33	17
Crewe Alexandra	19	5	5	9	25	34	15
Brighton & H. A.	21	5	5	11	26	38	15
Shrewsbury Town	20	5	5	10	17	30	15
Oldham Athletic	19	2	3	14	13	41	7

Suppliers to the Swindon Team

MAY WE SUPPLY YOU?



EARLE

of Chippenham Limited

MAIN

FORD

DEALERS

COCKLEBURY ROAD - CHIPPENHAM

Telephone 3255

SUPPORTERS CLUB NOTES

Tonight we welcome the officials, team and supporters of Burnley, to what is another highlight in the history of Swindon Town F.C. The prize, of course, is glittering and the lights of Wembley are already being reflected in the eyes of Swindon supporters. Steady, lads and lasses, the other side have ideas as well.

This will be no easy task tonight. But on behalf of all of you, let me say to the lads on the field, "Good luck, and rely on us to back you all the way to full time". Amongst you, apart from stand seats, are 500 Burnley supporters. Let them go back to Burnley, win, lose or draw, with high regard for Swindon Town supporters. And, once again, Town End supporters, let loose with the music and song, but watch the words. There is no virtue in giving offence to the ladies present, bless them.

Two matches so close together are murder for a programme note scribe. Something nearly always turns up, and tonight is no exception. I am bringing to the attention of you all, what is undoubtedly a cause worthy of any supporter. I refer to the Toc H match broadcasts to the Swindon Group Hospitals. For those not in the know, a running commentary of all home matches—and some away matches where facilities are available, such as the Burnley game two weeks ago—is broadcast to wards in all Swindon Group Hospitals, for supporters unable to come to the County Ground.

This service is entirely voluntary on the part of the organisers—and Mr. Les Harris, the Secretary, tells me that

GREAT WESTERN HOTEL

SWINDON

Telephone 22047

**Weddings, Parties, Business Lunches and
Dinners a Speciality**

Excellent Food and Quick Service
A must before or after the match

VISIT OUR NEW STEAK BAR

... not just concrete, but

Premix

SWINDON AREA OFFICE c/o COLN GRAVEL CO. LTD.
CLAYDON PIKE LECHLADE GLOS.

phone LECHLADE 461/2

Premix—an Amey company—serves 21 counties

SUPPORTERS' CLUB NOTES—continued

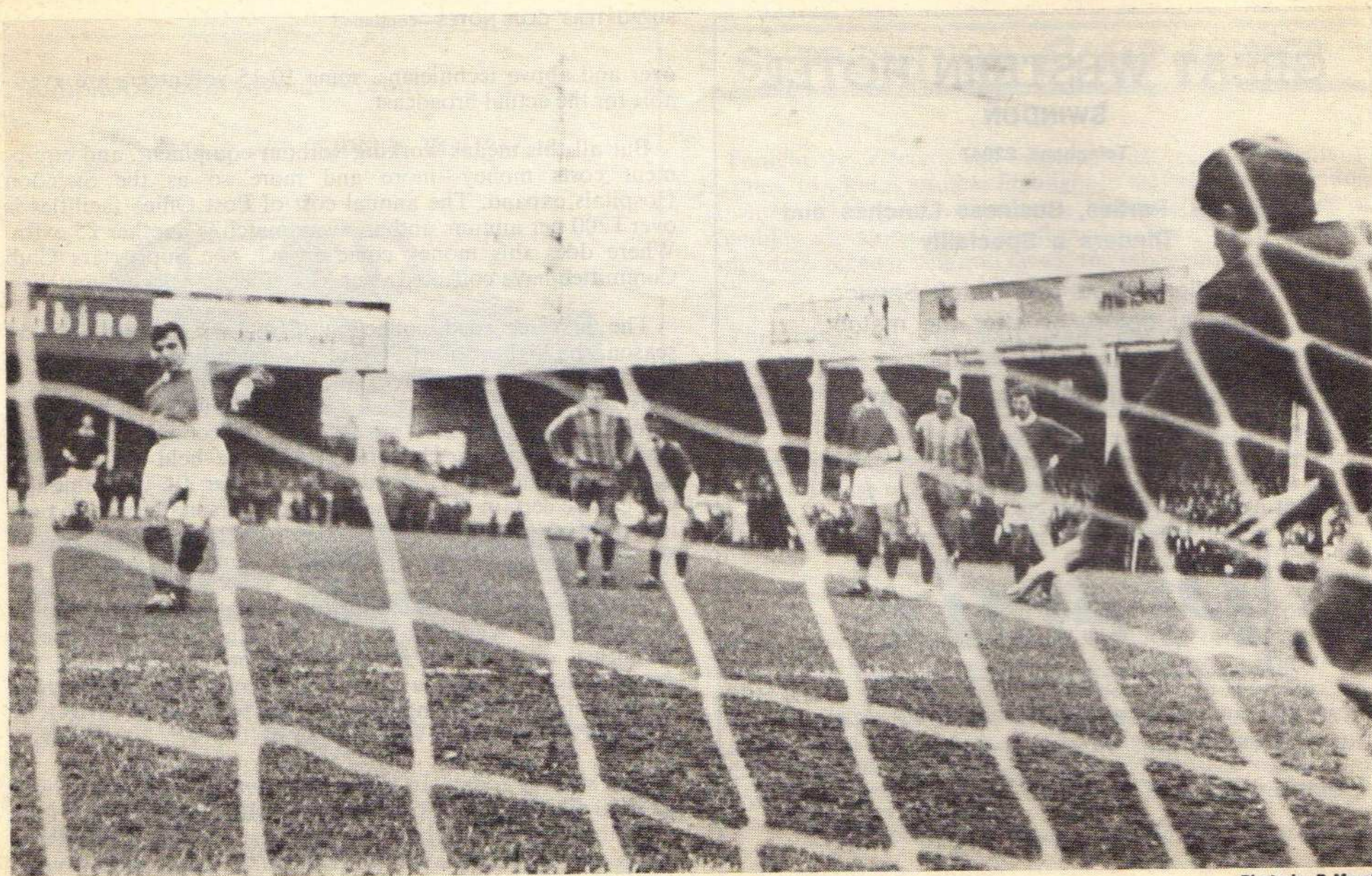
over and above technicians, some 10-15 volunteers are available for the actual broadcast.

But all this means working without equipment, and equipment costs money—more and more so as the Swindon Hospitals expand. The annual cost of Post Office facilities is over £200 per annum, and an away match is another £5 extra. Where does this money come from? The Supporters Club Committee have collected your assistance at selected matches.

The first recorded collection, £129, was in the 1953-54 season, the highest of all. Up to and including last season—a disappointing amount of £37—over £740 has been donated. This season it is hoped that a collection will be made at a home match and once again, our collecting boxes, with assistance from Toc H members, will be held out for your donations. Let it be a record-breaker, after all, who amongst you can be certain that, sometime, you personally will be only too pleased to enjoy the facilities in a bed at the Princess Margaret Hospital—even perhaps in the maternity ward.

Mr. Harris has also asked me to say that music programmes on Mondays, Wednesdays and Saturdays are also being broadcast, on a record request basis and, he continued, "If anyone wishes to give a record, or records, for use in these programmes, please bring or send them to:—Mr. L. HARRIS, 17 GROVELANDS AVENUE, SWINDON".

That's it for today. In about two hours from now I hope we shall all be on our way to Wembley. If not, then I trust I am not out of order in wishing the very best of luck to Burnley—unless we have a replay to go through, in which case, I withdraw the good wishes until the appropriate time.



The Canterbury goalkeeper's view of Don Rogers penalty on its way to the net.

Photo by R Marsh

MEMORABLE YEARS IN THE POST-WAR HISTORY OF BURNLEY FOOTBALL CLUB

Formed in 1881 when amalgamated with the local rugby football club, Burnley F.C. has twice won the First Division championship, topped the Second Division once and appeared three times in the F.A. Cup Final, winning once and losing twice.

In June, 1968, the club completed 21 years' continuous membership of the First Division and here is a list of memorable years in Burnley's post-war history, the figures on the left denoting the second half of the season concerned.

- 1947** Promoted from the Second Division to the First Division for the third time. Also losing F.A. Cup finalists to Charlton Athletic.
- 1948** Third in the First Division, level on points with Manchester United, the runners-up.
- 1957** In the last eight of the F.A. Cup. Scored 16 goals in the first two matches. Beaten in the sixth round by Aston Villa, the eventual winners of the trophy.
- 1959** Again beaten in the quarter final by Aston Villa.
- 1960** First Division champions for the second time. Went to U.S.A. to compete in an international tournament.
- 1961** Represented England in European Cup.
- 1962** F.A. Cup finalists, First Division runners-up, Central League champions.
- 1963** Central League champions again.
- 1966** Third in First Division.
- 1967** Took part in the European Fairs Cup and reached the quarter final stage.
- 1968** Reached the final of the F.A. Youth Cup competition for the first time.

BURNLEY FOOTBALL CLUB'S LIST OF HONOURS

F.A. CUP WINNERS: 1913-14.

F.A. CUP FINALISTS: 1946-47, 1961-62.

LEAGUE CHAMPIONS, DIVISION ONE: 1920-21, 1959-60.

LEAGUE CHAMPIONS, DIVISION TWO: 1897-98.

LEAGUE CHAMPIONS, CENTRAL LEAGUE: 1948-49, 1961-62, 1962-63.

LEAGUE DIVISION ONE RUNNERS-UP: 1919-20, 1961-62.

LEAGUE DIVISION TWO RUNNERS-UP: 1912-13, 1946-47.

LANCASHIRE SENIOR CUP WINNERS: 1889, 1915, 1950, 1952, 1960, 1965, 1966.

HOLDERS, RECORD NUMBER OF 30 DIVISION ONE MATCHES WITHOUT A DEFEAT, 1920-21.

G. H. FLOWER & SON LIMITED

WOOD LANE, CHIPPENHAM

LICENCE No. S.2802

PHONE 2017

SCRAP METAL

and

GENERAL WASTE SALVAGE DEALERS

Plant dismantling carried out

Members of

National Association of Non-Ferrous Metal Merchants

G. A. STREETLY

Tobacconist and Confectioner

10 BOURNE ROAD - MOREDON - SWINDON

Telephone 4956

"COAL!"

"COAL!"

"COAL!"

J. WILMER

St. Margaret's Road
Swindon

Telephone 22535

LEESE, ING & CO. LTD.

Mineral Water and Squash Manufacturers

LANSDOWN ROAD - SWINDON

TELEPHONE 22744

Train for the soccer season—
shoot from **Swindon** every day to

LONDON (over 15 trains)

BRISTOL (9 trains)

CARDIFF (9 trains)

All the services are in the free pocket timetables

Going out for the day?
Ask for the Western Bargains folder

Get these travel aids at
stations or travel agents



Inter-City

DO not let **CHILBLAINS** spoil a good game



RELAPERN

Price 2/6 from your CHEMIST

2/10 Post Paid from

BALLARD & CO. (CHEMISTS) LTD.
FARINGDON - BERKSHIRE

FORTHCOMING MATCHES

SATURDAY, 14th DECEMBER, 1968

DIVISION III

BRIGHTON & HOVE A.

Kick-off 3 p.m.

SATURDAY, 21st DECEMBER, 1968

FOOTBALL COMBINATION

SWANSEA TOWN

Kick-off 3 p.m.

SATURDAY, 28th DECEMBER, 1968

DIVISION III

OLDHAM ATHLETIC

Kick-off 3 p.m.

DON ROGERS SPORTS

29 FARINGDON ROAD, SWINDON

Stockists of all leading sports equipment
Discount to all clubs

Suppliers to Swindon Town Football Club

Telephone 27378

Maylott Studios

For Group & Sport Photographs

Official Photographer to
Swindon Town Football Club

31 FARINGDON ROAD

Telephone 22792

Notton's Cafe

COUNTY ROAD
200 yards from Ground

Perfect meals at all times

L. Wollen

OFF LICENCE

WINES and SPIRITS

Arkell's Ales and Stout

373 Cricklade Road, Swindon

Deliveries Daily Phone 3508

C. DUNN & SON

Builders and Decorators

Alterations, Renovations
Conversions, Plumbers and
Sanitary Engineers

503 Cricklade Rd. Tel: 22522

THE PORK SHOP

(Swindon Bacon Curling Co. Ltd.)

Specialists in

BACON - PORK - COOKED HAM

50 FLEET STREET - SWINDON

TELEPHONE 22122

LEAGUE PRESS ARTICLE

There were a few thousand soccer fans sitting by their radio sets in the Middle East on Saturday afternoon, tuning in to a special "live" commentary on the Chelsea v. Leeds United First Division match at Stamford Bridge.

The broadcast, transmitted by the B.B.C.'s International Service was the first of its kind to this part of the world.

Countries linked up to the commentary included Egypt, Jordan, Iraq, Lebanon, Saudi Arabia and the Gulf Ports of Kuwait and Bahrain.

The interest in English soccer in the Middle East has increased tremendously since the World Cup in 1966, especially in Egypt, where Football League fixtures are used on their football pools.

In the past, special matches such as F.A. Cup Finals and international games have been broadcast in the Middle East, but not until now has a League game been transmitted live.

The commentary on the final 40 minutes of the Chelsea v. Leeds United game was by Musa Bishunty and Akram Saleh, two of the regular broadcasters for the Arabic Service who also supplied news bulletins during the game.

Meet the



"ROGUES", "CADS" and "JUNIORS"

Shoes too comfortable to take off



at the

Swindon Co-op Society Limited

Fleet Steet

Swindon

MAN IN CHARGE

Referee for tonight is Mr. Ken Burns of Dudley, Worcestershire, who has had eight years' experience as a League referee and three as a linesman.

In his young days Mr. Burns played in local junior leagues, and while serving in the Army he was selected for the Western Command representative team.

His route to the top as a referee was via the Wolverhampton and District Amateur League, the Worcestershire Combination and the Birmingham and District League (now the West Midlands League).

Mr. Burns is an enthusiastic cricketer, and has had trials with both Worcestershire and Warwickshire. He is employed as a legal executive by a Cradley Heath firm of solicitors, and his other sporting interests include snooker and golf.

As it happened v. Burnley (1st Leg)



*Top Left:—Near miss by Peter Noble.
Bottom Left:—Peter Noble gets the winner.*

*Top Right:—Stan Harland joins the attack.
Bottom Right:—Frank Burrows heads wide.*

As it happened v. Derby County (5th Round)



Don Rogers gets the winner.

As it happened v. Coventry City (4th Round)



As it happened v. Derby County (5th Round)



*Top Left:—Glazier saves.
Bottom Left:—Roger Smart scores.*



*Top Right:—Mackay stands guard.
Bottom Right:—Green gets down to it.*

As it happened v. Coventry City (4th Round)



Willie Penman scores the third.

Photos by R. Marsh.

Cecil Green

Artistic Decorations in all its branches

12 Armstrong Street, Swindon, Wilts. Tel. 4593

W. COLLINS (Swindon) LTD.

TURF ACCOUNTANTS

69 COMMERCIAL ROAD - SWINDON

TEL. 21371

AND AT THE GREEN, LYNEHAM



CLARK BROS. (Swindon) Ltd.

Building and Civil Engineering Contractors

CONSULT US FOR

BUILDING AND CIVIL ENGINEERING
CONSTRUCTION IN ALL ITS PHASES

STRATTON ROAD
SWINDON

Telephone
Swindon 27261



throughout the West

you will find Bradley Estates beautifully situated to meet the requirements of modern living. If you are thinking about a new home and would like to receive full details of our current and planned estates write now to 74 Victoria Road Swindon Wiltshire. Please send me details of

- Green Meadow Estate, Swindon, Wiltshire
- Nythe Estate, Swindon, Wiltshire
- Monkton Park Estate, Chippenham, Wiltshire
- Park Hill Estate, Frome, Somerset
- Damory Down Estate, Blandford Forum, Dorset
- Harkwood Farm Estate, Poole, Dorset
- Roman Way Estate, Bourton-on-the-Water, Gloucestershire

Name

Address



BRADLEYESTATES



MY MASTER SAYS THAT
MAN'S SECOND BEST FRIEND
IS A SAVINGS BANK ACCOUNT

INTEREST 6% IN THE
SPECIAL INVESTMENT DEPT.

Local Offices
17 Commercial Road, Swindon
6 Maryport Street, Devizes.

T RUSTEE
S AVINGS
B ANK

8,000 SEATS FOR SHEFFIELD WEDNESDAY F.C.

6,000 SEATS FOR SHEFFIELD UNITED F.C.

7,000 SEATS FOR ASTON VILLA F.C.

3,000 SEATS FOR OLDHAM F.C.

3,500 SEATS FOR LEEDS UNITED F.C.

4,000 SEATS FOR PETERBOROUGH AGRICULTURAL SOCIETY

13,500 SEATS FOR HULL CITY F.C.

3,200 SEATS FOR COVENTRY CITY F.C.

FAST, EFFICIENT SERVICE FROM MARTYN LYNSHAW LTD.

THE LATEST THING IN STADIUM SEATING

- MANUFACTURED IN HIGH-DENSITY POLYTHENE
- NO MAINTENANCE
- ANY COLOUR
- SEND FOR DETAILS
- LIGHT CONSTRUCTIONAL STEELWORK
- ANCILLARY WORK FOR THE BUILDING TRADE



FAST EFFICIENT SERVICE BY
MARTYN LYNSHAW LIMITED

Telephone
21844

BOUNDARY WORKS - STRATTON ROAD - SWINDON